



Anchor Resources Limited

Company Update

PDAC Conference – Toronto, Canada

Managing Director: Trevor Woolfe

2 – 6 March 2008

March 2008

Anchor Resources Ltd at PDAC

1



Board of Directors

Chairman - John Anderson

B Com, MBA

Managing Director - Trevor Woolfe

B Sc (Hons), M AusIMM, GCertAppFin

Executive Director - Grant Craighead

B Sc, M AusIMM

Non-executive Director - Gary Fallon

B App Sc, M SEG, M AusIMM

March 2008

Anchor Resources Ltd at PDAC

2



Company Profile

Listed in Australia

ASX code: AHR / AHRO

- * Raised \$3.5m via IPO (May 07)
- * Listed on ASX (July 07)
- * Raised \$153,000 via options entitlement (late 07)

Issued Share Capital, as at 20 February 2008:

		<u>12m Trading Range</u>	<u>Last (20 Feb)</u>
30,680,000	ordinary shares	12c – 24c	15c
15,304,688	listed options	1.8c – 6c	2.1c
1,500,000	unlisted options		

Market Capitalisation (20 Feb 08) \$4.6m

Cash at bank (31 Dec 07) \$3.1m

March 2008

Anchor Resources Ltd at PDAC

3



Company Strategy

Objective : *To create wealth for Anchor shareholders through the identification of high quality projects, successful exploration and development of mineral properties.*

The Company will:

- Explore for high value commodities in favourable geological settings
- Employ effective exploration techniques in a cost-effective manner
- Utilise vast in-house international experience to identify and assess new opportunities with potential to accelerate growth
- Advance suitable projects to mine development

March 2008

Anchor Resources Ltd at PDAC

4



Tenement Portfolio

- As at 29 February 2008:
 - 9 projects
- Queensland**
- Aspiring (uranium)
 - Featherbeds (uranium)
 - Hot Springs (uranium)
 - Greenvale East (tin, tungsten, gold)
- New South Wales**
- Bielsdown (antimony, gold)
 - Blicks (copper, gold)
 - Birdwood (copper, gold)
 - Canonba (copper, gold)
 - Collaroy (copper, gold)



March 2008

Anchor Resources Ltd at PDAC

5



Company Structure



March 2008

Anchor Resources Ltd at PDAC

6



NSW Projects

- **Bielsdown (Sb/Au) EL6388**
- north of Dorrigo, NSW
- **Blicks (Cu/Au/Mo) EL6465**
- northwest of Dorrigo, NSW
- **Birdwood (Cu/Au/Mo) EL6459**
- west of Wauchope, NSW
- **Canonba/Collaroy (Cu/Au) EL6928 and EL6929**
- west of Nyngan, NSW



March 2008

Anchor Resources Ltd at PDAC

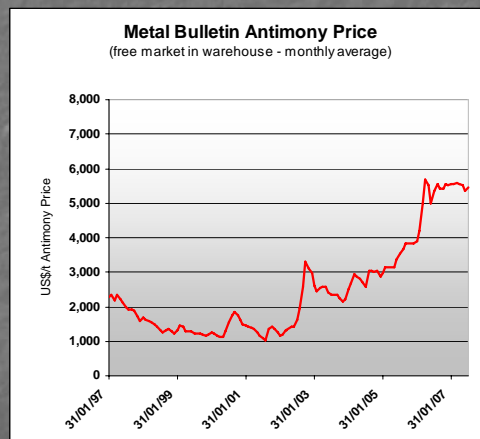
7



NSW Projects - Bielsdown (AHR 100%)

- Exploration Licence EL 6388
- Advanced antimony (Sb) - gold (Au) project
- Sub-vertical veined shear zone
- ~100 holes drilled in 1960s and 1990s
- **Antimony price at historical highs**
- U\$2.47/lb or U\$5444/t (Jul07)*

* Metal Bulletin



March 2008

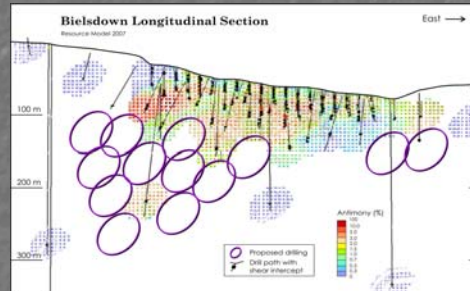
Anchor Resources Ltd at PDAC

8



NSW Projects - Bielsdown (AHR 100%)

- JORC compliant resource (2007)
459,000t at 3.0% Sb
(=> 14,000 tonnes Sb)
- Access negotiations advancing
- Drilling planned in 2008 to expand the resource at depth and along strike
- near Hillgrove Sb-Au project
- SRL plans 250,000 tpa



March 2008

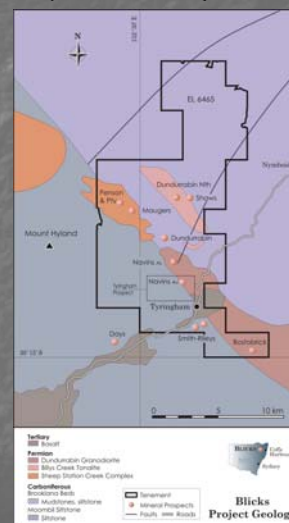
Anchor Resources Ltd at PDAC

9



NSW Projects - Blicks (AHR 100%)

- Exploration Licence EL 6465
- Copper-gold-molybdenum project
- Drilling late March/April 2008 on these 2 previously drilled prospects:
 - Old Dundurrabin mine: Cu (-Au-Ag)
(see next slide)
 - Tyringham – historical drilling
96m at 0.23g/t gold



March 2008

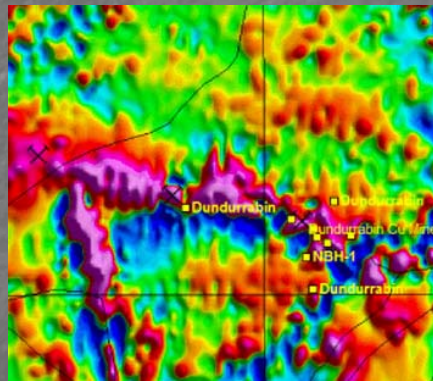
Anchor Resources Ltd at PDAC

10



NSW Projects - Blicks (AHR 100%)

- Dundurrabin Prospect – copper-gold
- Drilling late March/April 2008
- Historical diamond drilling:
 - 33.9m at 1.27% copper
 - 18.1m at 1.23% copper
- Gold values to 4.54g/t in recent DDH re-assays
- Ground magnetics confirms significant east-west trending host structure →



March 2008

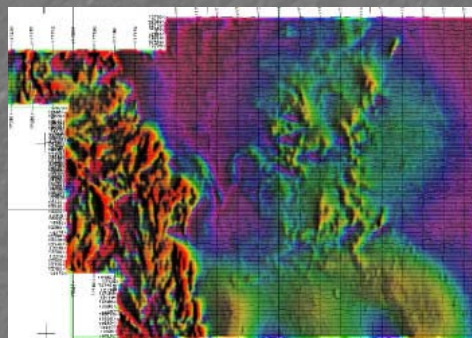
Anchor Resources Ltd at PDAC

11



NSW Projects - Birdwood (AHR 100%)

- Exploration Licence EL 6459
- Copper-gold-molybdenum (Mo) project
- Sheeted vein style mineralisation
 - previous drilling incl. 13m @ 0.79% Cu
- 2,234 line kms of airborne geophysics completed Sept 07
- Processing and interpretation has outlined strong targets
- Preliminary TMI image →



March 2008

Anchor Resources Ltd at PDAC

12



NSW Projects – Canonba/Collaroy (AHR 100%)

- ELs 6928 (Canonba) and 6929 (Collaroy)
- Strategic copper-gold projects
- Tritton-Girilambone style mineralisation (existing mines)
- NE-SW trending corridor
- At least eight copper targets identified
- Drill-ready targets for 1H08



March 2008

Anchor Resources Ltd at PDAC

13



Qld Projects

- **Chillagoe Uranium (U)**
- northeast of Chillagoe, Qld

Aspiring	EPM14752
Featherbeds	EPM15631
Hot Springs	EPM15987
- **Greenvale East (Sn/W/Au/Sb)**
- northeast of Greenvale, Qld
Greenvale East EPM14646



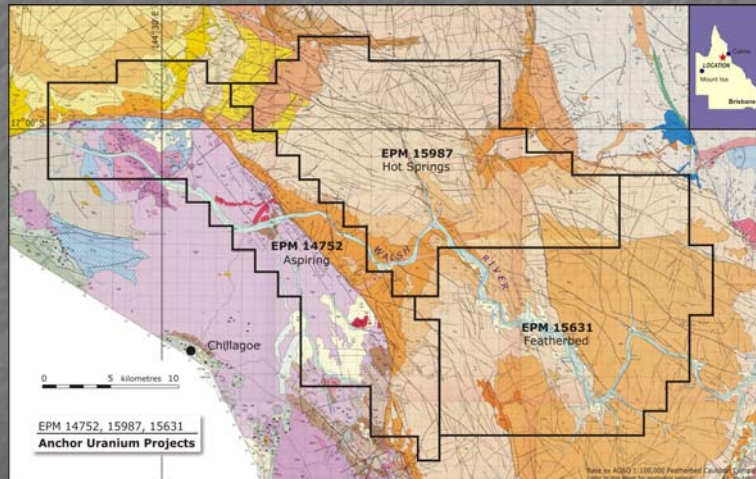
March 2008

Anchor Resources Ltd at PDAC

14



Old Projects – Chillagoe Uranium (AHR 100%)



March 2008

Anchor Resources Ltd at PDAC

15



Old Projects – Chillagoe Uranium (AHR 100%)

- Almost 1,000 sq. km of prospective uranium terrain
- Uranium values to 0.28% and significant radiometric anomalies
- Radium-bearing hot springs →
- Review early 2008 by uranium consultant identifies high potential for vein/breccia style uranium deposits
- Refining targets for drilling in 2008



March 2008

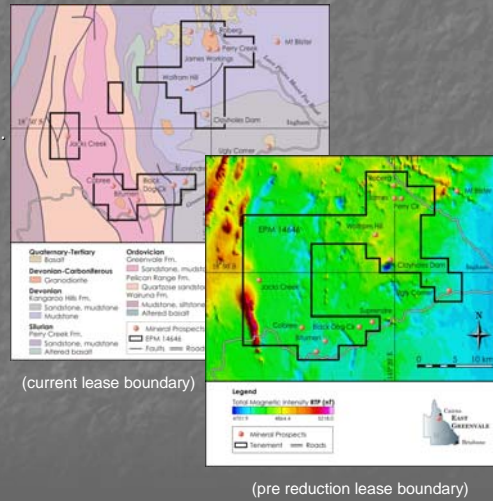
Anchor Resources Ltd at PDAC

16



Old Projects – Greenvale East (AHR 100%)

- EPM 14646
- Under-explored area with >14 areas of known mineralisation incl. gold, tin & tungsten
- Clayholes Dam (gold) magnetic anomaly – Old Govt CDI grant for drilling in April 2008
- Recent rockchips:
Jacks Creek - up to 6.3g/t gold and 39% antimony
Perry Creek – 19m @ 170ppm tungsten and 5m @ 419ppm tin (channel samples)



March 2008

Anchor Resources Ltd at PDAC

17



Declaration

Declaration: The information in this presentation relating to Exploration Results is based on information compiled by Trevor Woolfe BSc(Hons), MAusIMM. Mr Woolfe is Managing Director and consultant to Anchor Resources Limited. Mr Woolfe has sufficient experience relevant to the assessment of this style of mineralisation to qualify as a Competent Person as defined in the "Australasian Code for Reporting of Exploration Results, Mineral Resources and Ore Reserves – The JORC Code". Mr Woolfe consents to the inclusion of the information in the report in the form and context in which it appears.

Thank you

March 2008

Anchor Resources Ltd at PDAC

18